

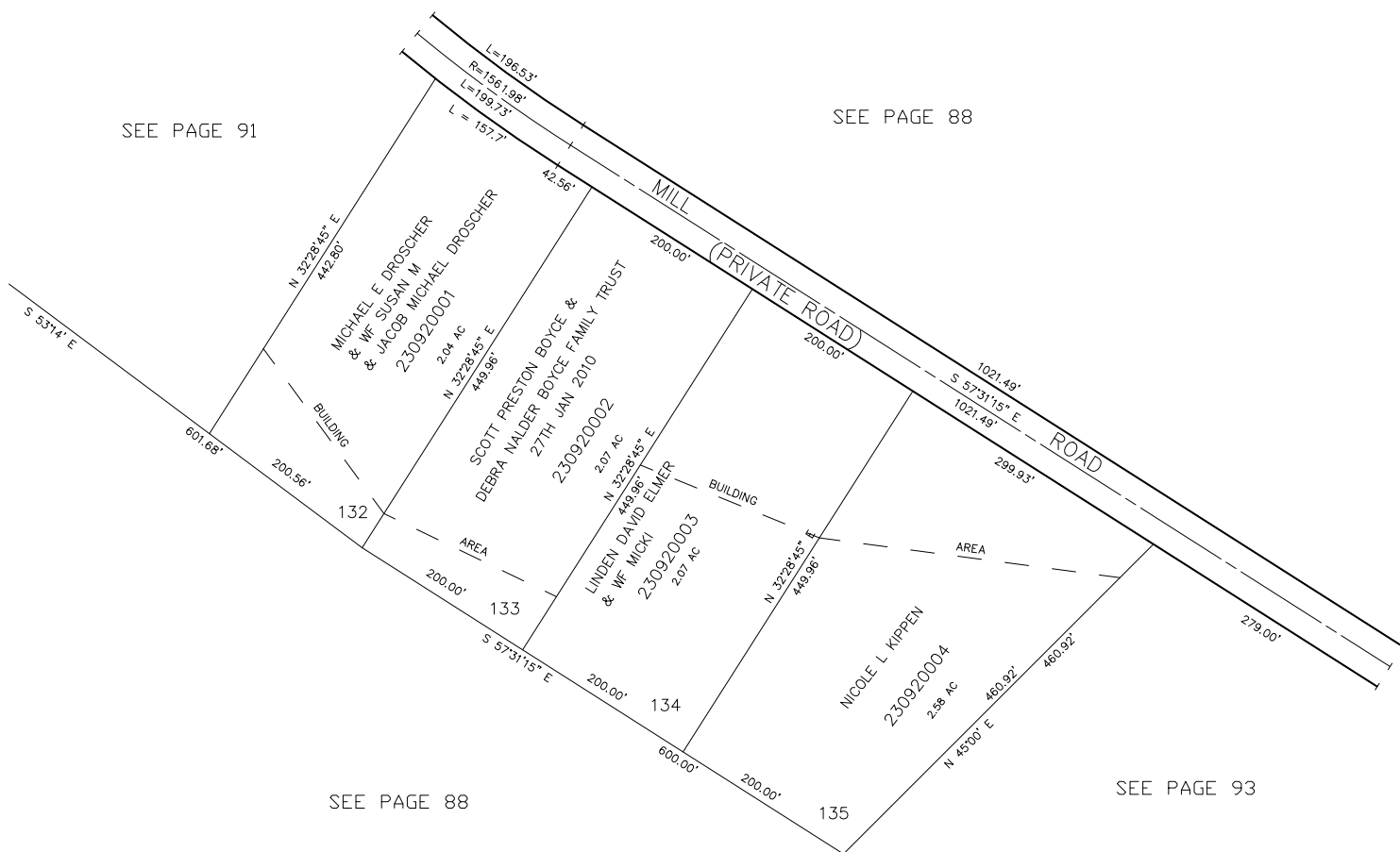
PART OF SECTION 11,12,13,14, T.6N., R.3E., S.L.B. & M.
CAUSEY ESTATES SUBDIVISION NO. 3

LOTS 132-135

IN WEBER COUNTY

SCALE 1" = 100'

TAXING UNIT: 520



FOR COMPLETE ENG DATA SEE
 ORIGINAL DEDICATION PLAT IN
 BOOK 24, PAGES 38,39,40 OF RECORDS.